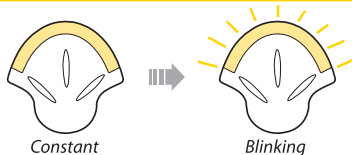
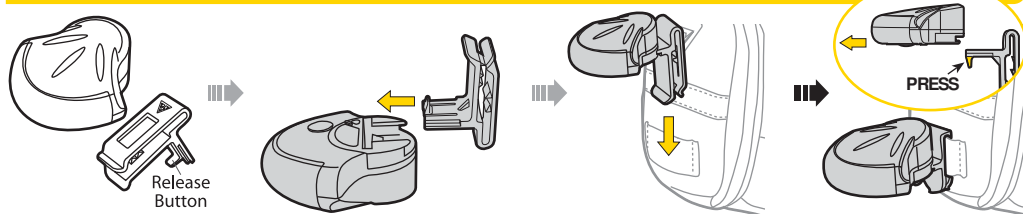


1. Light Body
2. Clip (for Topeak wedge and trunk bags)
3. Clamp (for seatpost / seatstay)
- 4a. Rubber Strap (for seatstay)
- 4b. Rubber Strap (for seatpost)

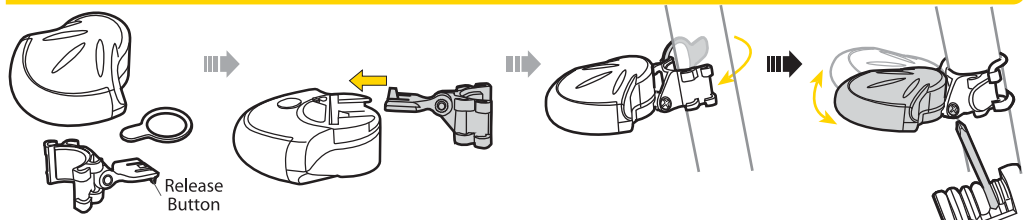
MODE



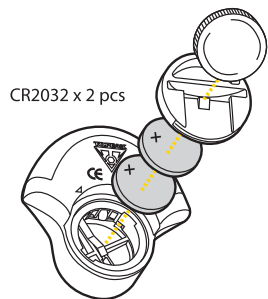
MOUNTING FOR TOPEAK WEDGE AND TRUNK BAGS



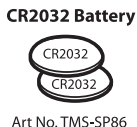
MOUNTING FOR SEATPOST/SEATSTAY



CHANGING BATTERY



SPARE PARTS



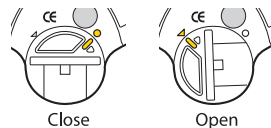
SPECIFICATIONS

- Function:** blinking and constant
- Bulb:** 4 Red L.E.D.
- Battery:** Lithium Battery "CR2032" x 2 pcs
- Burn Time:** 60 hours (constant use)
- Weight:** 20 grams (light only)

WARNING

Although light body is water-resistant (under normal weather conditions of rain, etc.) never intentionally submerge it under water.

NOTE



WARRANTY

1-year Warranty: All mechanical components against manufacturer defects only. Batteries are not covered under any implied warranty.

Warranty Claim Requirements

To obtain warranty service, you must have your original sales receipt. Items returned without a sales receipt will assume that the warranty begins on the date of manufacture. All warranties will be void if the product is damaged due to user crash, abuse, system alteration, modification, or used in any way not intended as described in this manual.

* The specifications and design are subject to change without notice.

Topeak products are available only from professional bicycle shops.

Please contact your nearest Topeak authorized bicycle dealer for any questions.

For customers in the USA, call: 1-800-250-3068

Website: www.topeak.com